

NEOREST®

MS993CUMFX

NEOREST® 750H Dual Flush Toilet, 1.0GPF

FEATURES

- TORNADO FLUSH® siphon jet flushing system, ultra-high efficiency.
- Actilight® Clean light cleaning system built in lid
- CEFIONTECT® ceramic glaze minimizes waste from sticking to porous ceramic surfaces
- Dual Flush function (1.0GPF/3.8LPF and 0.8GPF/3.0LPF)
- Universal Height
- WASHLET® with three wash modes (front, rear, soft)
- Oscillating and Pulsing comfort washing
- Auto lid open/close, auto flush
- Automatic air purifying system
- Adjustable heated seat
- Adjustable spray position
- Programmable energy saver system
- Back-up manual flush
- EWATER+® - mists the bowl with electrolyzed water, reducing the need for harsh cleaning chemicals.
- Multifunctional remote control
- ADA compliant

COMPONENTS

- SN993MX#01 - Top Unit
- CT993CUMFX#01 - Elongated Bowl

Note: SN993MX Only compatible with CT993CUMFX

COLORS/FINISHES

- #01 Cotton

PRODUCT SPECIFICATION

The NEOREST 750H with the TORNADO FLUSH system toilet shall be 1.0GPF/3.8LPF and 0.8 GPF/3.0 LPF. Toilet shall have Actilight cleaning system, CEFIONTECT ceramic glaze and be at Universal Height. Toilet shall be of skirted design, elongated front bowl with auto open and close seat. Toilet shall be **TOTO Model MS993CUMFX#01.**



EWATER+



CEFIONTECT



Actilight



TORNADO FLUSH

CODES/STANDARDS

- Meets and exceeds ASME A112.4.2, ASME A112.19.2/CSA B45.1, ASME A112.18.1/CSA B125.1, UL 1431, CSA C22.2 # 68
- Certifications: IAPMO(cUPC), State of Massachusetts, City of Los Angeles and others
- Code Compliance: UPC, IPC, NSPC, and others
- ADA compliant
- Complies with CA Prop 65 warning requirements



MS993CUMFX

NEOREST® 750H Dual Flush Toilet, 1.0GPF

SPECIFICATIONS

Water Use: 1.0 GPF/3.8 LPF & 0.8 GPF/3.0 LPF
 Flush System: TORNADO FLUSH Siphon Jet
 Water Pressure: Min 7 PSI (0.05MPa) Flowing
 Max 105 PSI (0.75 MPa) Static
 Min Flow Rate: 2.64 gal/min (10 L/min)
 Water Surface: 8-3/4" x 7-1/4"
 Trap Diameter: 2-1/8" (54 mm)
 Rough In: 12" rough-in
 Warning: If there is a base board in the restroom, the center of the floor drain should be a minimum of 12" from the base board.

Trap Seal: 2-1/16" (53 mm)
 Warranty: Three Year Limited (Residential)
 One Year Limited (Commercial)

Material: Bowl: Vitreous china
 Seat and cover: Plastic

Shipping Weight: Top Unit - SN993MX 17.6lbs
 Bowl Unit - CT993CUMFX

106lbs

Shipping Dimensions: SN993MX - 20-5/8" x 34-13/16" x 8-13/16"
 CT993CUMFX - 18-13/16" x 33-1/4" x 24-7/8"

Power Rating 120V AC, 60 Hz.1300W
 Power Cord Maximum length: 4 ft (1.2 m)

Water Feature Adjustable Water Flow Rate
 Rear Washing from 9.1 to 14.5 oz/min.
 Soft Washing from 10.8 to 14.5 oz/min.
 Front Washing from 9.8 to 14.5 oz/min.
 Wide Front Washing from 11.8 to 14.5 oz/min.

Washing Spray Temperature Minimum: 86° F/30° C
 Maximum: 104° F/40° C
 Safety Feature Temperature fuse and float switch

Drying Feature Air Temperature:
 High: About 130°F/55°C
 Low: About 95°F/35°C

Capacity of Air 10.2 ft³/min
 Safety Feature Temperature fuse

Seat Warming Feature Surface Temperature:
 Minimum: 82° F/28° C
 Maximum: 97° F/36° C

Seat Heater Capacity 60W
 Safety Feature Thermal fuse

Air Purifying Feature Method: O₂ Deodorizer
 Air Volume: 5.7 ft³/min

Ambient Temperature Range 32°F/0°C to 104°F/40°C

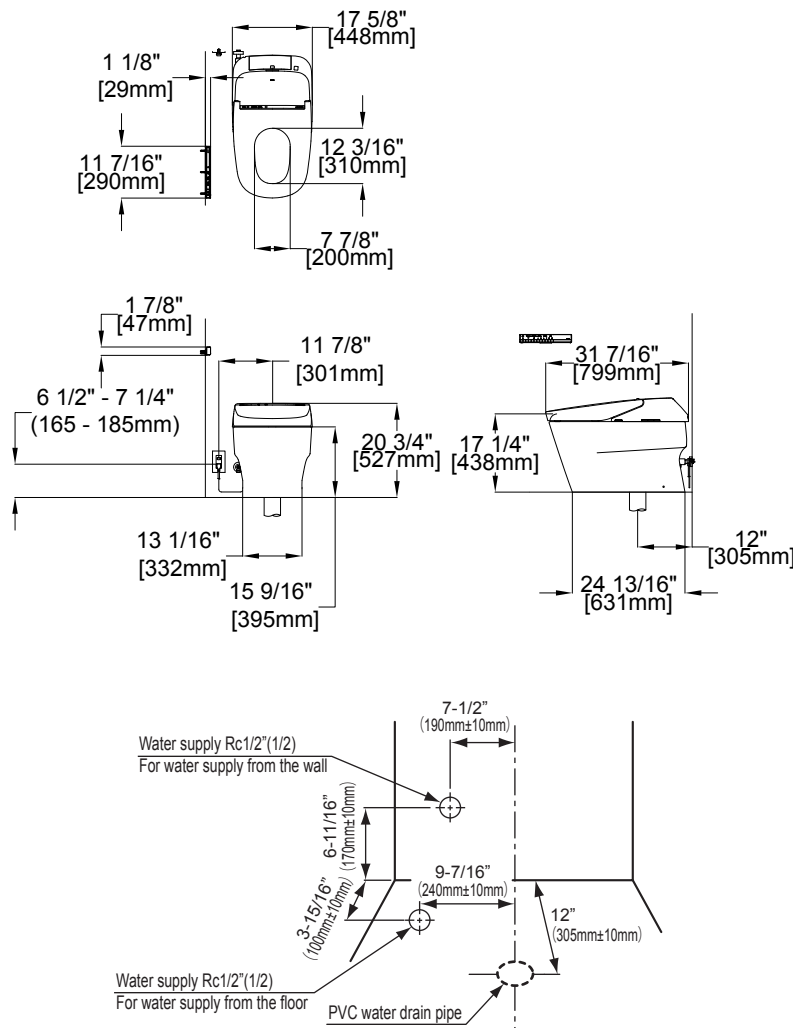
Product Size 17-5/18" x 31-7/16" x 20-3/4"

Weight Net: 123.6 lbs.

Floor to Seat Height: 17 1/4" (438mm)

INSTALLATION NOTES

- For use with potable water only. Do not use with recycled water.



These dimensions and specifications are subject to change without notice